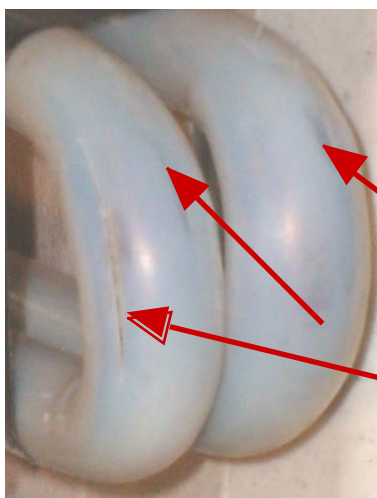
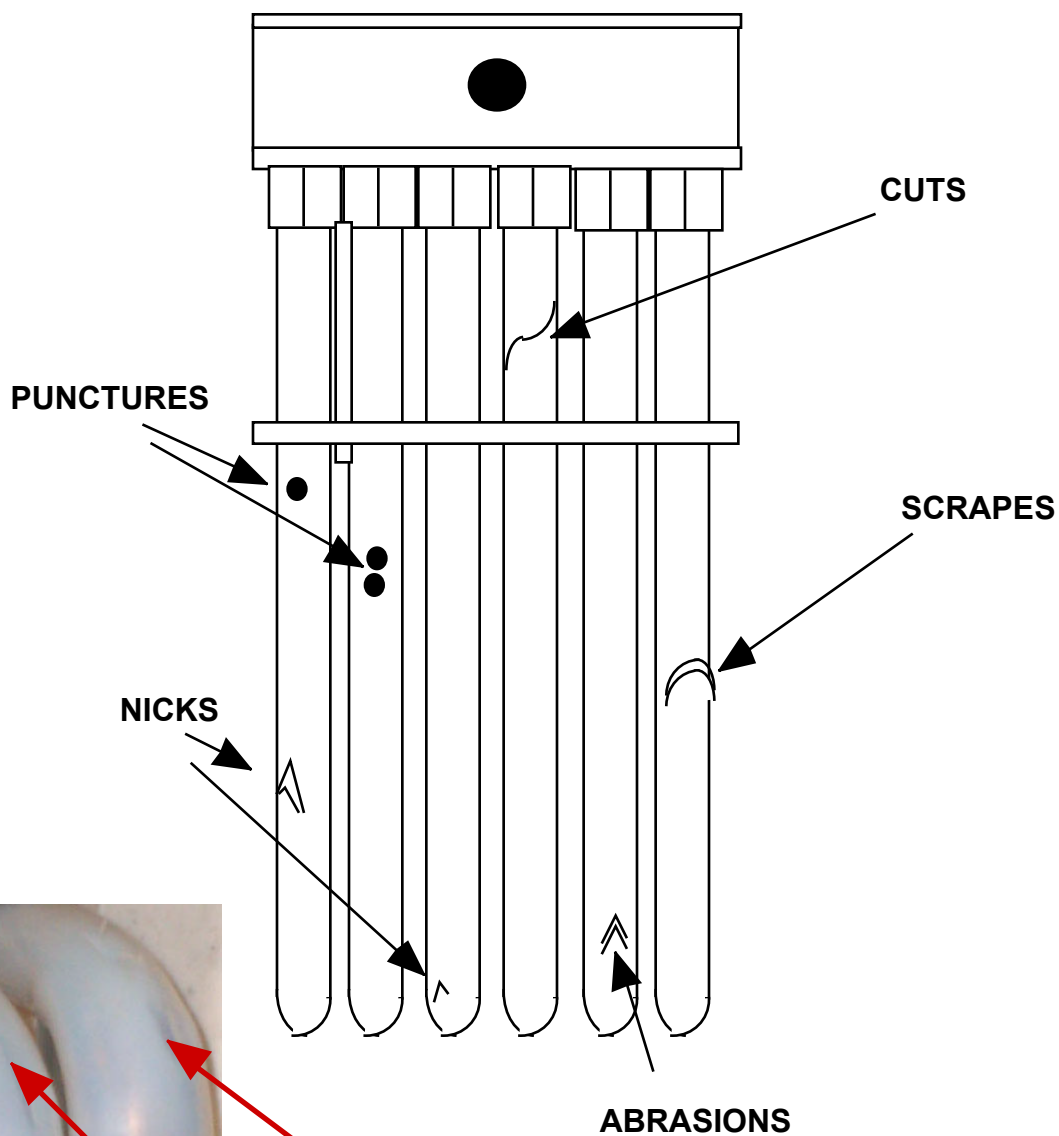


HANDLE YOUR FLUOROPOLYMER HEATER WITH CARE

FLUOROPOLYMER ELECTRIC IMMERSION HEATERS ARE ABRASION AND CUT SENSITIVE. MAKE SURE TO HANDLE YOUR HEATER WITH CARE AND PLACE IT IN A TANK LOCATION WHERE IT WILL NOT COME INTO CONTACT WITH WORK IN PROCESS OR OTHER EQUIPMENT.

FLUOROPOLYMER IMMERSION HEATER



EXAMPLE

Scuffs and Cuts at Bottom Heater Can Lead To Acid Entry To Internal Metal Heater